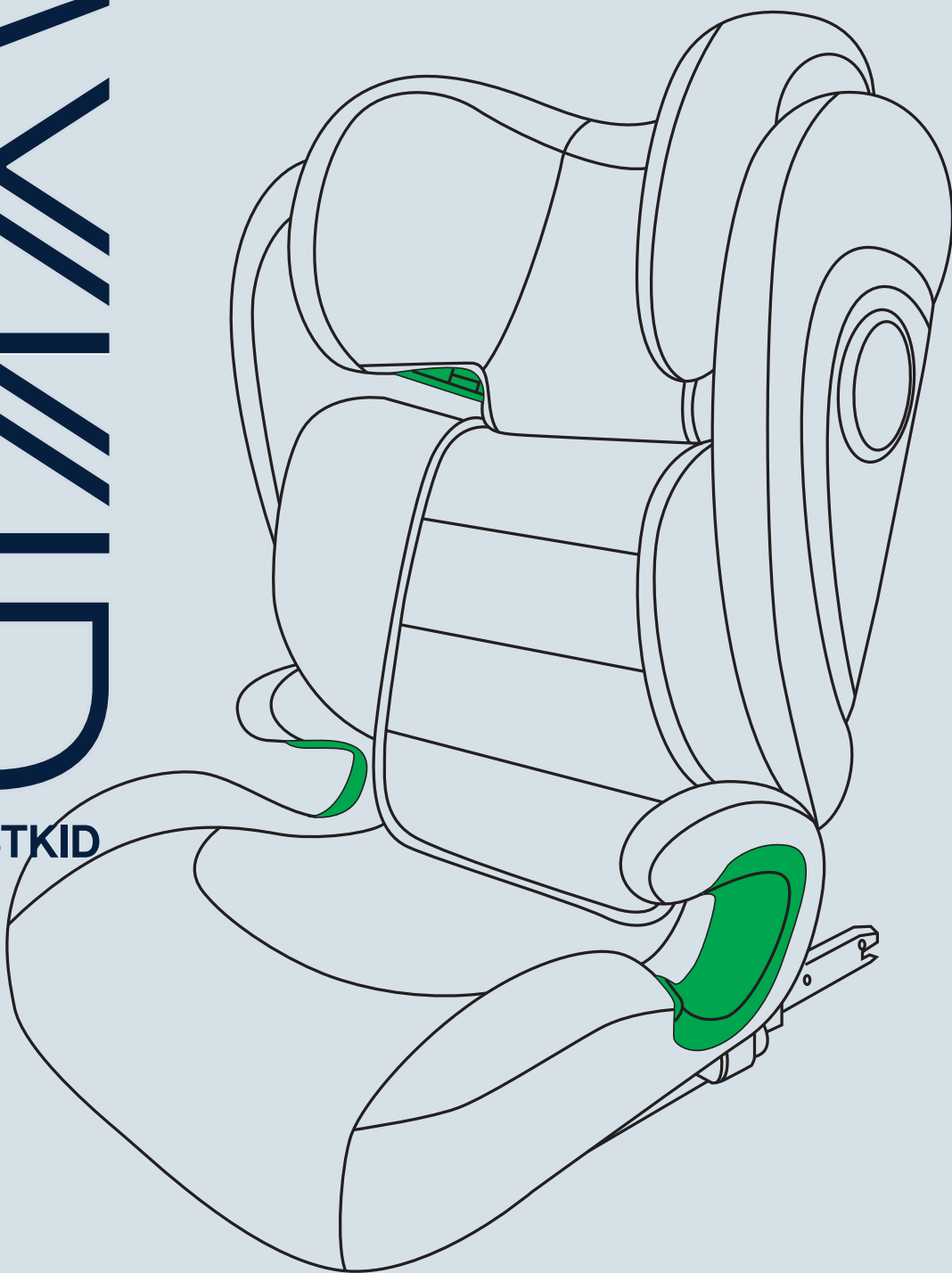


# AXKID

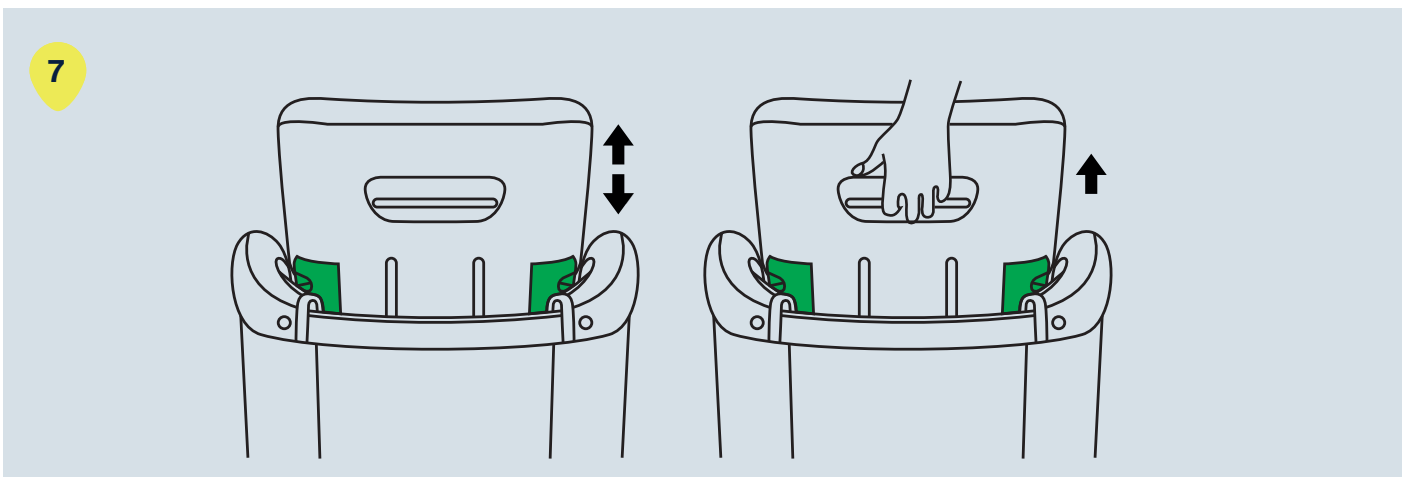
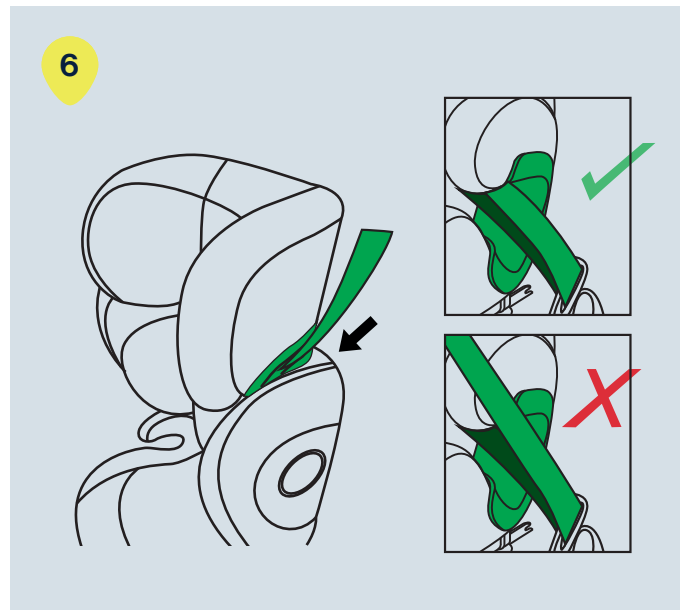
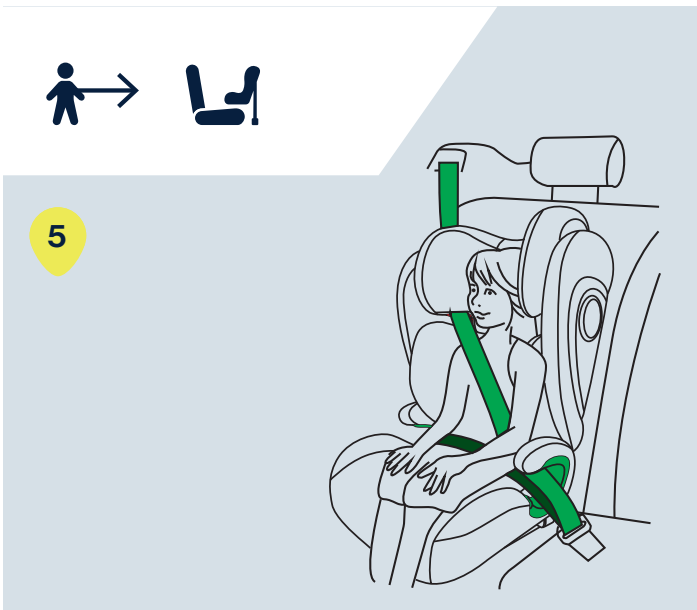
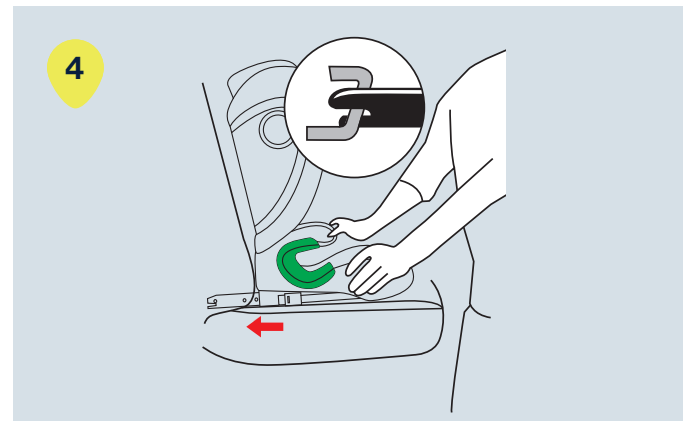
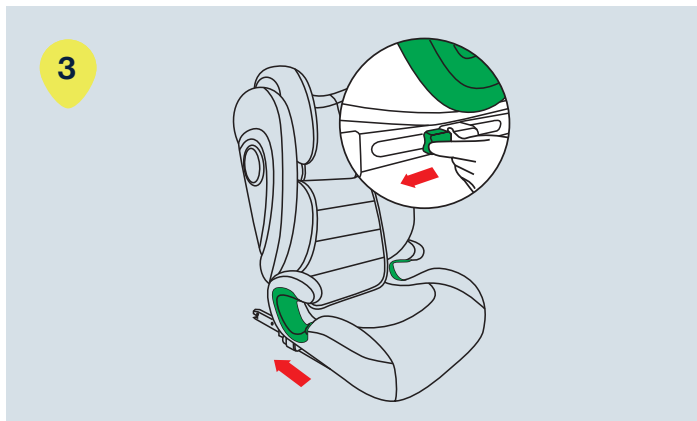
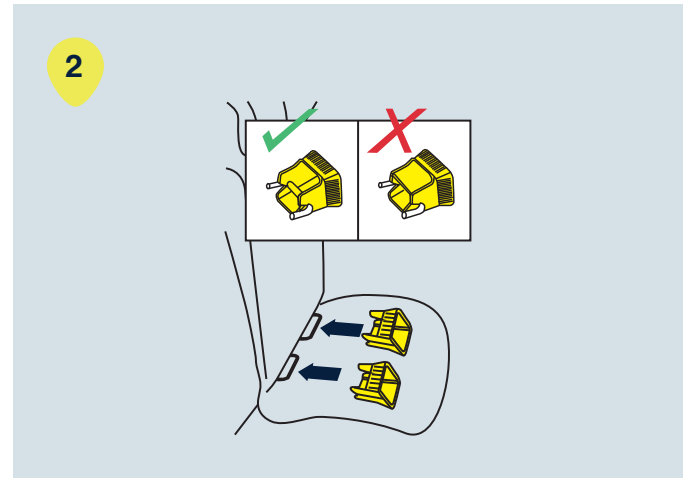
BOOSTKID



**UN regulation no. 129**  
**Instruction Manual**  
Axkid Boostkid, 100-150 cm

**Designed  
in Sweden**





**Sverige/Norge**

Axkid AB

[www.axkid.com](http://www.axkid.com)

[info@axkid.com](mailto:info@axkid.com)

Tel: (+46) 511 760 620

**UK/Ireland**

Axkid Ltd

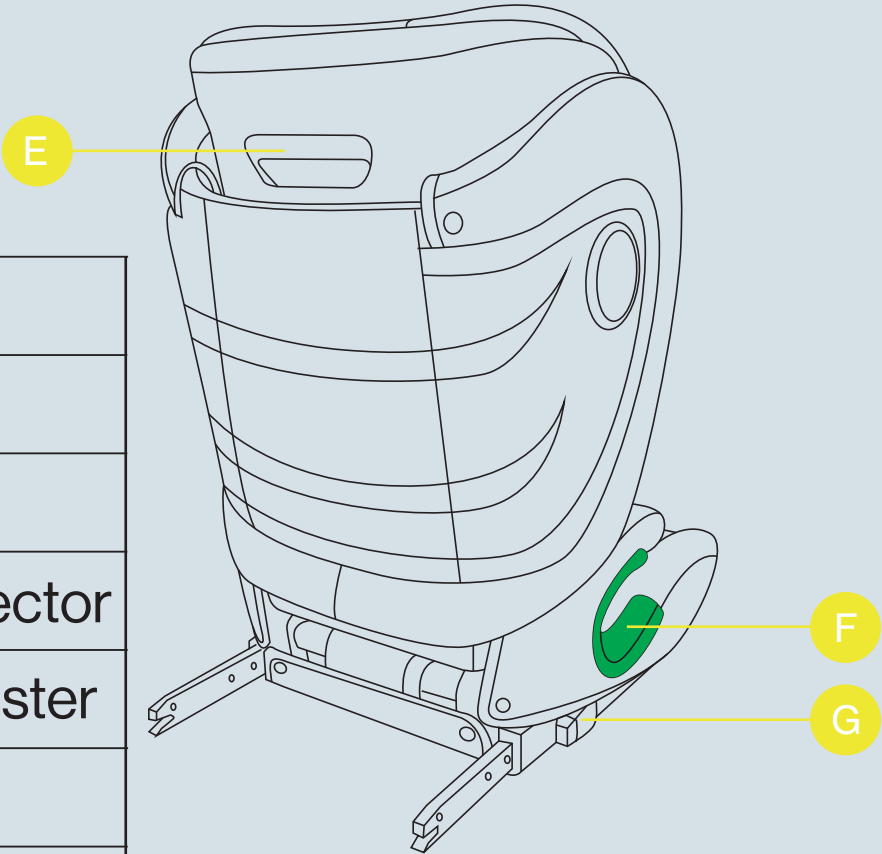
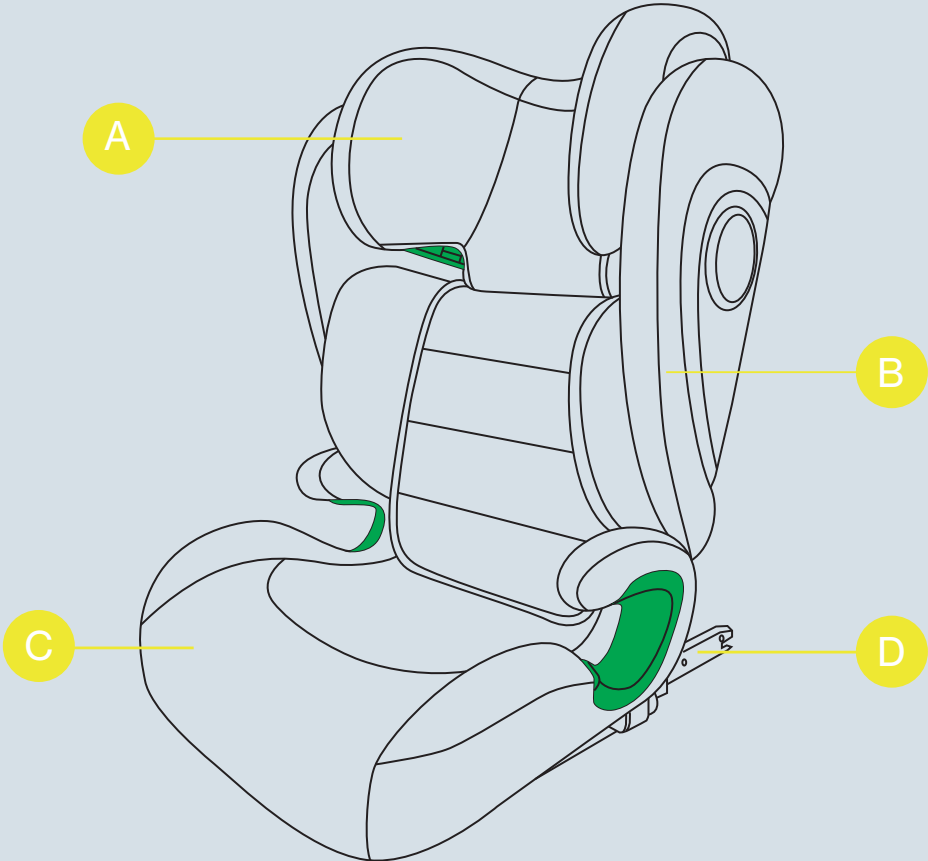
[www.axkid.com](http://www.axkid.com)

[info@axkid.com](mailto:info@axkid.com)

Tel: (+46) 0511 – 760 620

# AXKID

# Parts



|    |                   |
|----|-------------------|
| A. | Headrest          |
| B. | Backrest          |
| C. | Base              |
| D. | ISOFIX-connector  |
| E. | Headrest adjuster |
| F. | Belt guidance     |
| G. | ISOFIX button     |

# Thank you for choosing Axxkid Boostkid

Read this instruction manual before installing Axxkid Boostkid car seat in your vehicle. For more information and installation videos visit [www.axkid.com](http://www.axkid.com).

**Axxkid Boostkid is a forward-facing car seat approved for children between 100 to 150 cm and is approved according to ECE R129.**

If in doubt, contact your retailer who can demonstrate a correct installation. An incorrect installation could endanger your child.

## Important information

To maximize your child's safety, it is important that you keep the following in mind:

- Always follow the instructions in this manual. An incorrect installation may seriously affect the safety of your child. If in doubt, contact your retailer who can demonstrate the correct installation.
- Keep this instruction manual for future reference. If manual is lost, you can find it online at [www.axkid.com](http://www.axkid.com)
- Do not use the car seat in a seating position where an active frontal airbag is fitted. If you still wish to install the car seat in this location the airbag must be switched off according to the vehicle manufacturers instructions.
- Should you have an accident, no matter how small, your car seat should always be replaced. It may have damage that is not visible and could seriously affect the safety of your child. For this reason, Axxkid does not recommend purchasing secondhand car seats.
- If the car seat has been exposed to direct sunlight, make sure the car seat is not too hot before installing your child.
- Never leave your child unattended in the vehicle.
- Ensure that any luggage or loose objects are secured in your vehicle as they may cause injuries to passengers in the event of an accident.
- Ensure that the car seat is installed in a way where no parts become trapped by movable seats, car doors, etc.
- The car seat may only be installed forward-facing.
- Always make sure that the seat belt is adjusted to correctly fit your child's body.
- Make sure that the child's back is pushed against the car seat when restraining your child with the seat belt.
- Make sure there is no twist in the seat belt.
- Do not attempt to disassemble or modify any part of the car seat. The warranty and the safety performance of the car seat could be affected if doing so.
- Never use the car seat without the textile cover. The seat textile cover is a safety feature and may only be replaced with an Axxkid original seat textile cover.
- Read the vehicle handbook to find which seating positions is suitable for this seat.
- Axxkid recommends to always use a seat protection to protect your vehicle seat from scratches and dirt.
- Note: If you have any doubts, contact the retailer where the car seat was purchased or contact [info@axkid.com](mailto:info@axkid.com)

## Product description

| Product        | Group      | Installation          | Type                   |
|----------------|------------|-----------------------|------------------------|
| Forward facing | 100-150 cm | ISOFIX + 3-Point Belt | i-Size booster cushion |
| Forward facing | 135-150 cm | ISOFIX + 3-Point Belt | i-Size booster cushion |

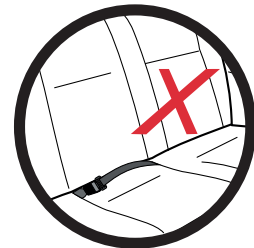
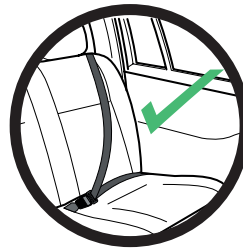
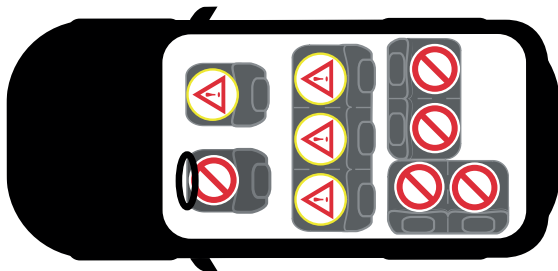
# Allowed and disallowed positions

The Axxkid Boostkid can be used on any forward-facing passenger seat which has a 3-point seat belt, approved to UN/ECE Regulation No. 16 or other equivalent standard. The Axxkid Boostkid cannot be used with a 2-point lap belt.

|  |     |
|--|-----|
| Front passenger seat (no active airbag)      | YES |
| Front passenger seat (active airbag)         | NO* |
| Forward-facing seat with 3-point safety belt | YES |
| Seat with 2-point safety belt                | NO  |
| Side-facing seats                            | NO  |
| Rear-facing seats                            | NO  |

**IMPORTANT:** The child should be a minimum of 140 cm in height to sit in front of an active airbag unless there are other recommendations from the car manufacturer. If you still wish to install Axxkid Boostkid in such seating position the airbag must be switched off according to the vehicle manufacturers instructions. it is important to always check if the vehicles indicator light shows that the airbag is turned off.

**IMPORTANT:** Never use on rearward or side facing vehicle seats.



## Installing the car seat in the vehicle

- 1 Place the child car seat in a suitable forward-facing position equipped with ISOFIX connection points. If the vehicle's seat back is adjustable, ensure it is in the upright position.
- 2 Find the ISOFIX connection points on the car and clip the two guide sleeves to the two ISOFIX connection points of the car to simplify installation.
- 3 Press and hold the ISOFIX button (D) while sliding out as far as possible.
- 4 Insert the ISOFIX connectors (D) to the ISOFIX connection point in the car. Make sure that there is a "click" sound and a green indication on both ISOFIX indicators (G). Push the car seat towards the vehicle seat back until there is no space between the vehicle seat back and the car seat.

**IMPORTANT:** When the ISOFIX unlock button is displayed in green, the ISOFIX is in the locked state, and when it is displayed in red, it is in the unlocked state.

**Tip:** For the location of the ISOFIX connection point, check your car's user manual.

# Restraining your child

- 5** Place your child in the child car seat and pull out the vehicle seat belt. Move the belt in front of the child connect the belt buckle. Make sure that you hear a click.
- 6** Pass the lap belt through the belt guide (B) on both sides. The shoulder belt should pass over the belt guide (B). Finally, check that all slack has been removed from the vehicle seat belt.
- 7** Adjust the height of the headrest if needed. Pull the Headrest Adjusting Handle (E) upward to proper height, making sure the Shoulder Belt is level with your child's shoulder. The correct height of the headrest is when there is 1 cm between the child's shoulder and the lower edge of the headrest (A). Once the right fit is found release the handle and check the headrest to ensure it is locked into position.

**WARNING:** An unoccupied car seat should be secured using a 3-point seat belt or the ISOFIX connectors.

**IMPORTANT:** The lap belt shall be worn low over the hips. Check that the lap belt passes through both green lap belt side guides.

**IMPORTANT:** Make sure the seat belt buckle is not wedged or interfering with the belt guides or ISOFIX connectors (D)

**IMPORTANT:** Never place your child in the car seat when it is not fitted in a vehicle.

**IMPORTANT:** Reclining the vehicle seat may adversely affect the position of the vehicle seat belt and may result in death or serious injury during a crash. Refer to your vehicle owner's manual for adjusting the vehicle seat back with car seats.

# Removing the car seat from your vehicle

- 8** Press and hold the ISOFIX unlock switch on both sides at the same time. At this time, the ISOFIX lock indicator turns red, which means it is unlocked. Pull the safety seat outwards to remove the safety seat.

# Seat adjustment

- 9** Pull the Headrest Adjusting Handle (H) upward to proper height, making sure the Shoulder Belt is level with your child's shoulder.
- 10** The correct height of the headrest is when there is 1 cm between the child's shoulder and the lower edge of the headrest (A). Once the right fit is found release the handle and check the headrest to ensure it is locked into position.

# Care and Maintenance

The cover can be removed for washing.  
Clean the shell using a damp cloth.

## Washing instructions

Never use any solvent, chemical detergent or lubricant on any part of your child seat.

|   |                   |
|---|-------------------|
| Hand wash, water temperature below 30 degrees.  | Do not tumble dry |
| Do not bleach                                   | Do not iron       |
| Dry clean, any solvent except trichloroethylene |                   |

## Recycling your seat



Axkid strongly recommends recycling of old car seats. Before leaving the base at your local recycling station separate metal and plastic parts if possible. The main part of the base should be marked unsafe or expired (use a marker) to deter anyone from using it again. Please check your local municipal guidelines for recycling instructions for the different materials.

## Warranty

Axkid Boostkid is covered by a 24-month warranty from date of purchase. Ensure you save your receipt and bring it to your place of purchase if you have any warranty issues.

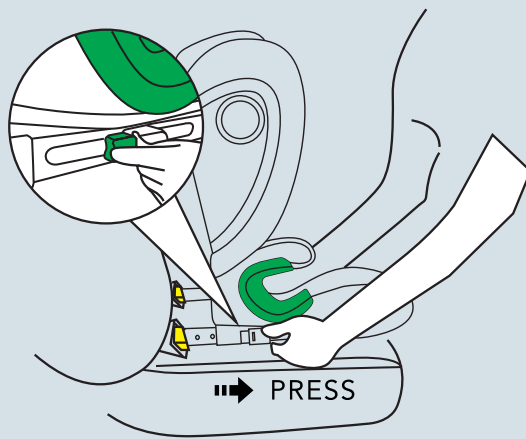
The warranty does not cover:

- Normal wear and tear
- Damage due to incorrect use, neglect, or accident
- If repairs have been carried out by a third party
- All materials used have a very high UV-resistance rating. However, UV-light is very aggressive and will ultimately lead to fading of the seat cover. This is not covered by our warranty as it is considered normal wear and tear.

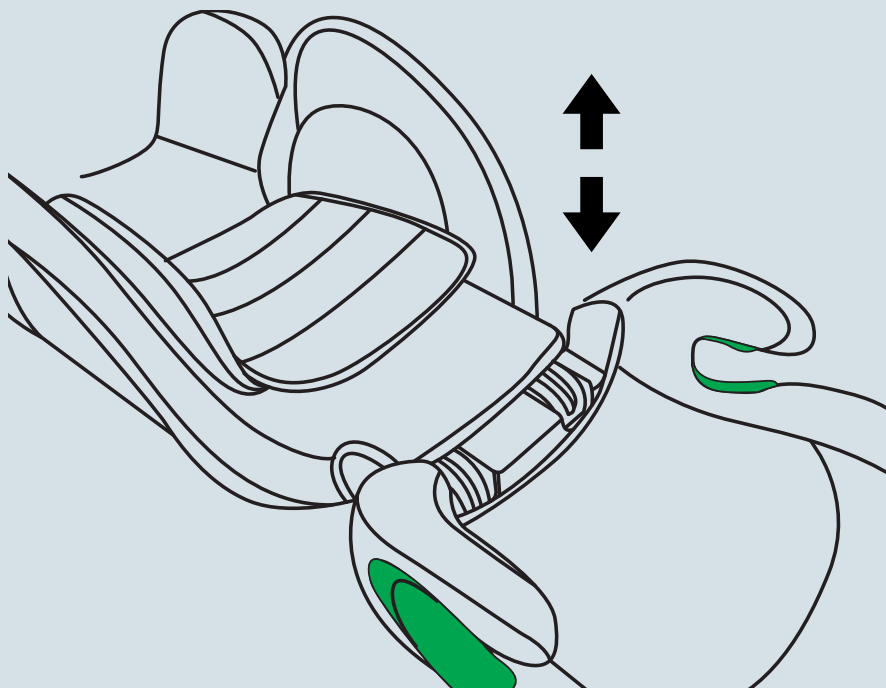




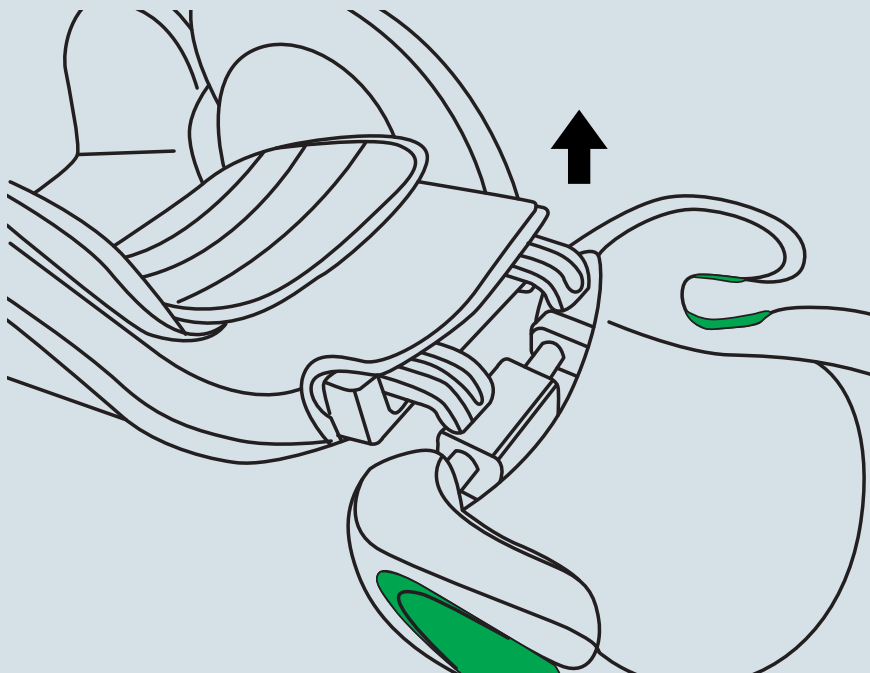
8



9



10

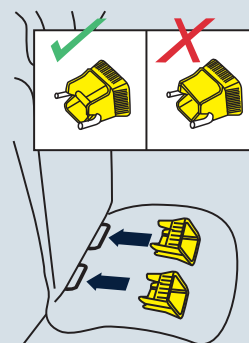




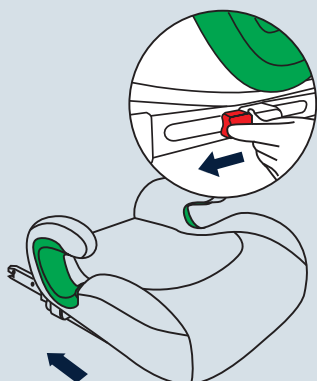
1



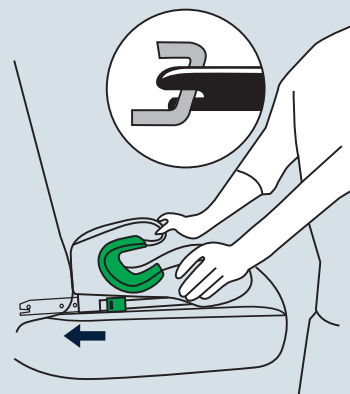
2



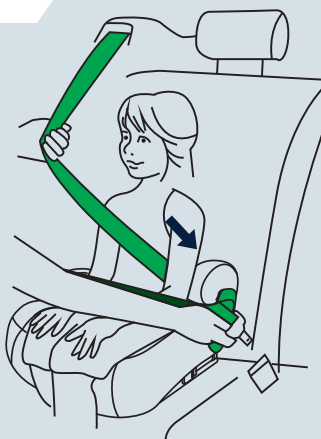
3



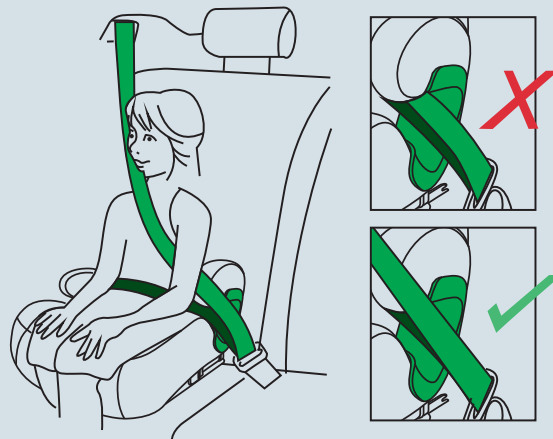
4



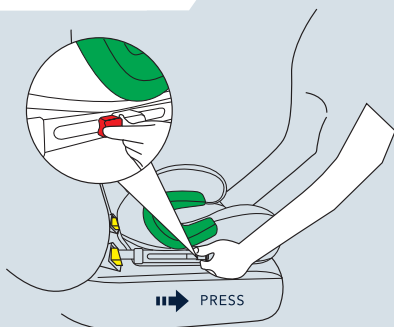
5



6



7



8

